

Decal Installation Instructions

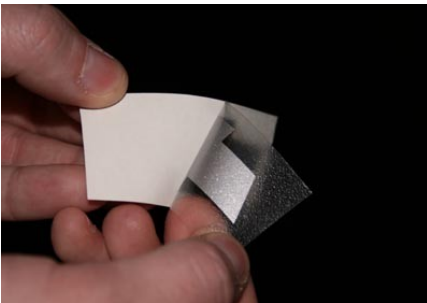
(These instructions apply to most decals except domed decals)



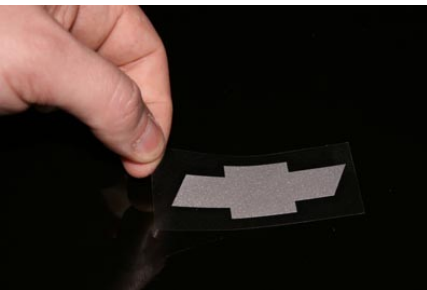
Step 1: This is one of the most important steps. Be sure to clean the area so it is free of wax, grease, oil, dirt, etc. To do this rubbing alcohol should work in most cases. Test a small area if you have any questions. Not properly cleaning the area may cause the decal to adhere incorrectly to the surface.



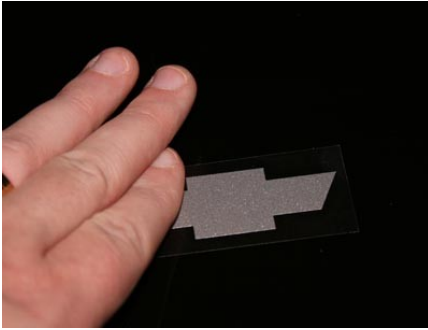
Step 2: (Optional) If your decal is attached to multiple decals such as the wheel overlays separate these first. This will make it easier to install.



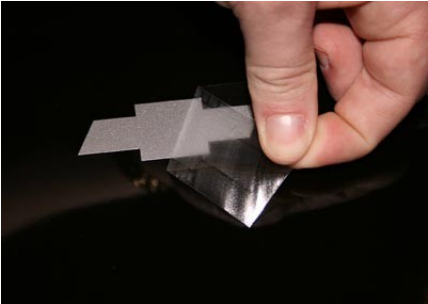
Step 3: All decals come in three parts: backing paper(white), decal(silver), and application tape(clear). You will pull the tape away from the backing paper and the decal will stick to the tape.



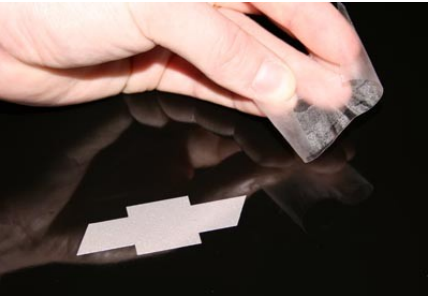
Step 4: Now position the decal, still on the application tape, wherever you will be placing it.



Step 5: Once you have the decal positioned where you would like it, rub the back of the application tape with your finger nail or credit card to make sure the decal underneath has adhered properly.



Step 6: With the decal rubbed down, starting at a corner, peel back the application tape at a 45 degree angle. The decal should remain on the surface below. If for some reason the decal starts to lift push the application back down and rub the back again. Pull slowly until the decal remains in place.



Step 7: Once step 6 is completed the tape can be discarded.



Step 8: Your decal installation should be complete.